

## Experiencing the Ces community ?

*Informations for interested people  
about living and working in Ces*

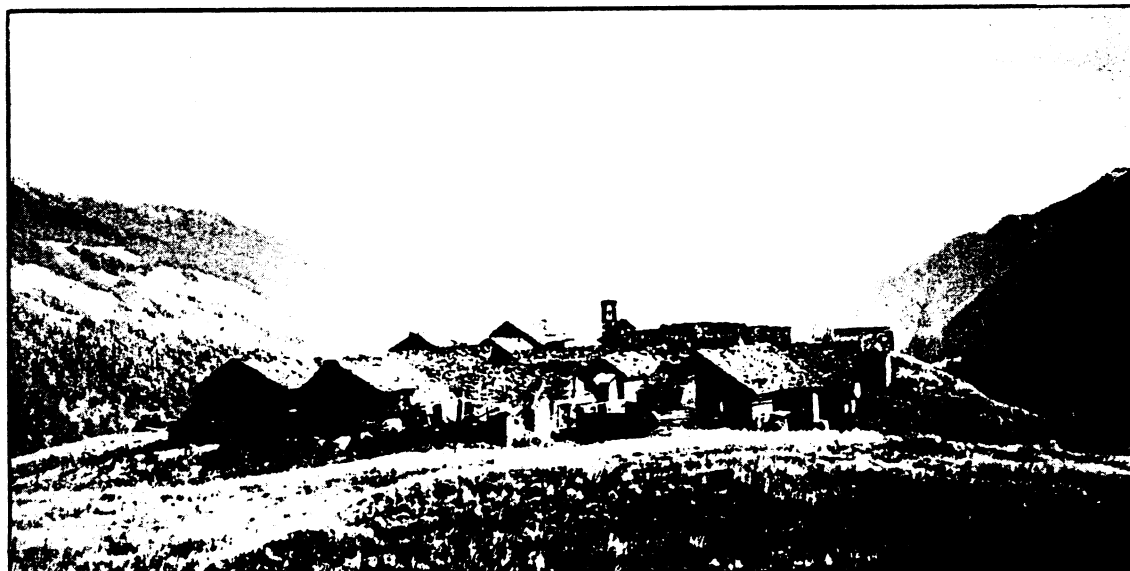
Ces is a small village in the southern Swiss alps. It lays on a wild wide plain on 1450 m., high above the Leventina Valley, one of the main traffic connections between Northern and Southern Europe. The village is formed by about 25 houses and stables, some of them laying in ruins, others rebuilt. As there is no road leading to Ces, the only way to reach this spot is by walking up the mountain. This takes about two hours, depending on your physical condition.

In the early 70's, some young people discovered Ces as an almost abandoned place. They began to reconstruct houses, started their first garden experiencies and got into farming work. To provide these activities with a legal base, the "Fondazione per la rinascita di Chiesso" was founded (this means: "Foundation for the renewal of Ces").

Today the "Fondazione" owns one third of the Ces buildings, including five living houses, as well as some gardens and plenty of agricultural land. In summertime there are up to fifty and more person living in Ces, together with a "basic group" of 5 to 8 persons – while in winter-time the village gets quiet with only a few people to keep the place.

The activities of the Ces community do not follow a special political or spiritual ideology beyond a stong relation to nature and ecology, as well as to community life and social autonomy.

Ces is a remote place, but not isolated: The project aims to have some influence on the "outer world" and demonstrate alternative lifestyles. As we often get visitors from many nations we're supplied with plenty of new inspirations.



## **Working in Ces**

The main working season is from June to September, with a peak in June / July due to the hay gathering work. Our different work branches are: Gardening, agriculture, constructing work, wood chopping and keeping contact with our visitors in the guesthouse. As we don't use many machines, some of the work is physically strenuous.

Working time may be irregular, depending on weather conditions, but takes about eight hours a day. We expect from all participants some efforts in the daily cooking and housing work.

(If you're asked at the Swiss border, don't tell you're going to work in Switzerland, as this is not allowed for foreigners. Tell them you're on holidays or doing voluntary work.)

## **Housing**

Usually we offer living and sleeping facilities in one or two of our houses. As we're sleeping in common sleeping rooms with two to ten beds, there is not much privacy inside the houses. Although we built our own small hydro power plant, we decided not to lead electricity wires in every house. Our life is simple: We're cooking on a wood fired stove, and discussions and games are shared by candle light. Food is partly produced in our own gardens, partly provided by other suppliers. Our "food policy" concentrates on biological food. Although we're not all strictly vegetarians, we don't eat much meat.

## **Languages**

The local language is Italian. The members of the "Fondazione" and most of our guests usually speak Swiss German, but some of us are also able to speak English, Italian, French, Dutch or Spanish.

## **Financial affairs**

If you do full time work in the project, we normally provide you with free food and accommodation. But as our funds are scarce, we would appreciate any contribution to these costs. If you want to do only part time work, you'll have to pay for the food (which is about CHF 12 a day); if you want to make holidays, CHF 10 in addition for accommodation. Unfortunately we can not pay your travelling fee or any other contribution.

(Please ensure your insurance contract includes incidents in Switzerland!)

## **To take with you:**

As we're living on 1450m., nights can be cold even in summer time. So take warm clothes and don't forget a good protection against rain (we do have Wellingtons). In the Ces mountain area good, strong shoes are necessary. Other useful things are a good sleeping bag and a torch.

(Not to take with you: Dogs and other animals!)

## **To get in contact**

To get to know each other, we invite you to share our community life for one or two weeks. If the relationship then seems to be based on a positive ground, prolongations are possible at any time.

*In any case you should contact us before you arrive to ensure that there is space for you.*

Please call us (Telephone ++41.91.865.14.14) and ask for...

## **To get there...**

*By train from the North:* Coming from Basel or Zürich, passing Arth-Goldau and the Gotthard tunnel, leaving the train at Airolo or Faido. From there take a PTT-Bus to Lavorgo.

*By train from the South:* Coming from Milano, Chiasso, Lugano or Locarno, leaving the train at Bellinzona or Biasca. From there take a PTT-Bus to Lavorgo.

*In Lavorgo* take a smaller PTT-Bus to Chironico-Posta. From there you have to walk up the hill, following the yellow signs marked "Ces".